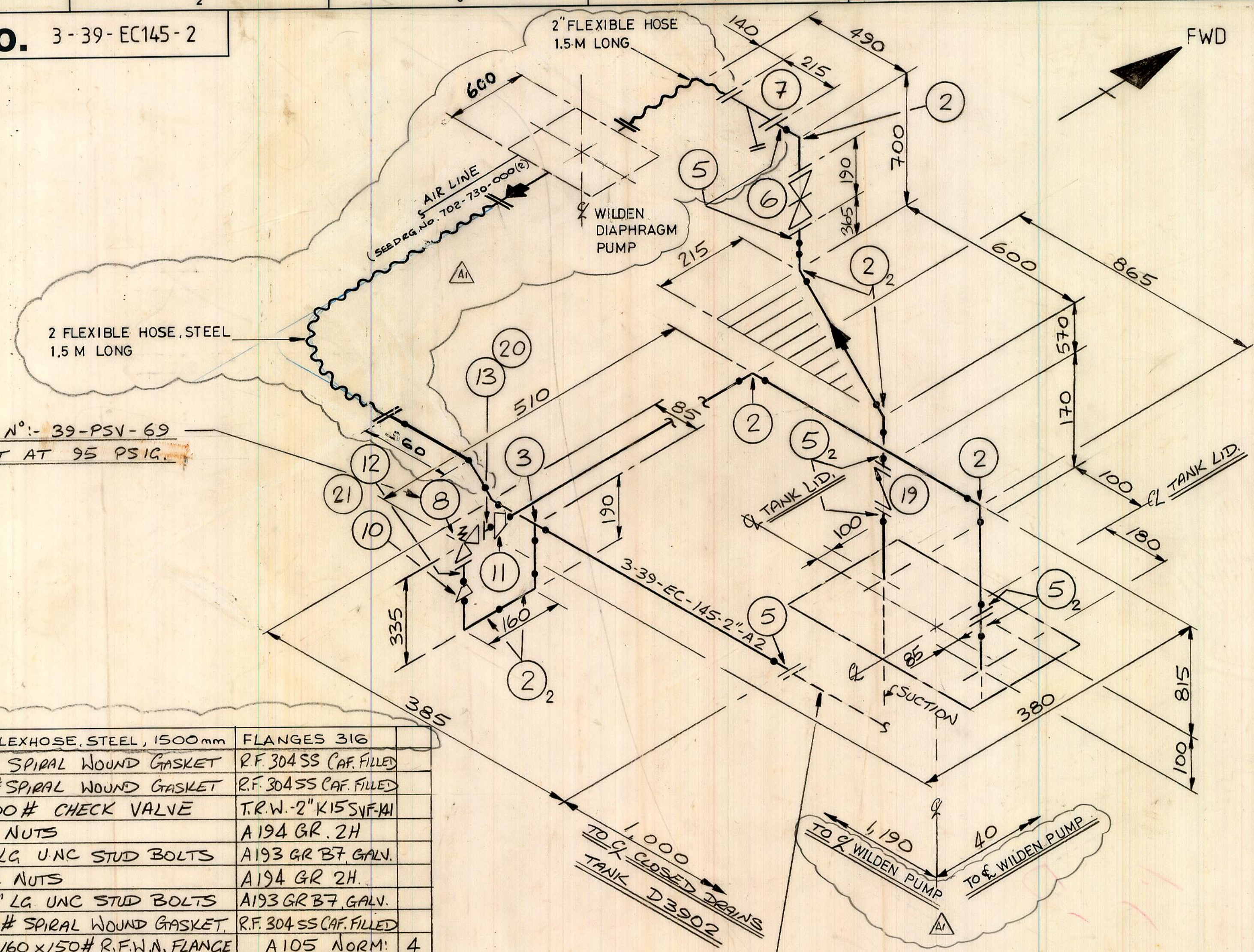


DRG. No. 3-39-EC145-2

NOTES

1/ SUCTION PIPE TERMINATES
75 MM ABOVE TANK BOTTOM.

3-39-EC145-2



ITEM	QTY	DESCRIPTION	MATERIAL / SUPPLIER	WT KG
22	2	2" ISO# FLEXHOSE, STEEL, 1500mm	FLANGES 316	
21	1	1 1/2" x 150# SPIRAL WOUND GASKET	R.F. 304 SS CAF. FILLED	
20	1	2 1/2" x 150# SPIRAL WOUND GASKET	R.F. 304 SS CAF. FILLED	
19	1	2" x 300# CHECK VALVE	T.R.W. 2" K15 SVF-KH	
18	8	1/2" UNC NUTS	A194 GR. 2H	
17	4	1/2" x 5" LG UNC STUD BOLTS	A193 GR B7, GALV.	
16	72	5/8" UNC NUTS	A194 GR 2H	
15	36	5/8" x 4" LG UNC STUD BOLTS	A193 GR B7, GALV.	
14	8	2" x 150# SPIRAL WOUND GASKET	R.F. 304 SS CAF. FILLED	
13	1	2 1/2" SCH 160 x 150# R.F.W.N. FLANGE	A105 NORM.	4
12	1	1 1/2" SCH 160 x 150# R.F.W.N. FLANGE	A105 NORM.	2
11	1	2 1/2" x 2" SCH 160 REDUCER B.W.	A234 GR WPB	2
10	1	2" x 1 1/2" SCH 160 REDUCER B.W.	A234 GR WPB	1
9	1	700 x 600 x 1/2 THK PLATE	BS 4360, 43A	39.6
8	1	RELIEF VALVE 1 1/2" INLET x 2 1/2" OUTLET	I.M.I BAILEY BIRKETT	
7	1	2" x 150# R.F. "Y" STRAINER	KEYSTONE VALVES	
6	1	2" x 150# R.F. GATE VALVE	HATTERSLEY HEATON	
5	9	2" SCH 160 x 150# R.F.W.N. FLANGES	A105 NORM.	25
4		NOT USED		
3	1	2" x 6000# B.W. TEE	A105	25
2	6	2" SCH 160, 90° L.R.B.W. ELBOW	A234	12
1	75m	2" SCH 160 SEAMLESS PIPE	A106 GR B.	83

REV	DESCRIPTION OF REVISION	CHNGE REQ BY	DRAWN BY	CHKD BY	APPRV BY	DATE
A1	UPDATED - MRS 01776		EG	26/5/88		
A	AS - BUILT - MRS 01942		BJG	DGW		9-88
ORIGINAL PROJECT No.						
PROJECT TITLE						
		HAMILTON BROTHERS OIL AND GAS LIMITED				
LOCATION: DEEPSEA PIONEER						
TITLE: WILDEN PUMP INSTALLATION PIPING ISOMETRIC						
DRG. No. 3-39-EC145-2						REV. A1
SHEET 2 OF 2						
ENGINEER H.B.O.G.LTD.	DRAWN BY BJG	CHECKED BY DGW	APPROVED H.B.O.G.LTD. R.B.	DATE 15-9-88		

THIS DRAWING CONTAINS PROPRIETARY
INFORMATION BELONGING TO HAMILTON
BROTHERS AND MAY NOT BE WHOLLY OR
PARTIALLY REPRODUCED NOR DISCLOSED
WITHOUT PRIOR WRITTEN PERMISSION
OF HAMILTON BROTHERS OIL AND GAS
LTD.